

CCMC 14138-R

CCMC Canadian code compliance evaluation

CCMC number:	14138-R
Status:	Active
Issue date:	2019-10-02
Modified date:	2023-11-21
Evaluation holder:	<p>Duka Technologies Inc. 400 Applewood Cres. Vaughan ON L4L 9N9 Canada Telephone: 416-887-2053</p>
Product name:	Duka Open Cell SPF
Compliance:	NBC 2015, NBC 2020
Criteria:	<p>CCMC-TG-072119.03-15, "CCMC Technical Guide for Spray-in-Place, Open-Cell Polyurethane Foam (OPF) Thermal Insulation"</p> <p>CCMC-TG-072119.03-20, "CCMC Technical Guide for Spray-in-Place, Open-Cell Polyurethane Foam (OPF) Thermal Insulation"</p>

In most jurisdictions this document is sufficient evidence for approval by Canadian authorities.

[Learn more about CCMC recognition](#) [Look for the trusted CCMC mark on products to verify compliance.](#)

Compliance opinion

It is the opinion of the Canadian Construction Materials Centre that the evaluated product, when used as a thermal insulation in accordance with the conditions and limitations stated in this evaluation, complies with the following codes:

National Building Code of Canada 2015

Code provision	Solution type
9.25.2.2. Insulation Materials	<u>Alternative</u>

National Building Code of Canada 2020

Code provision	Solution type
9.25.2.2. Insulation Materials	<u>Alternative</u>

The above opinion(s) is/are based on the evaluation by the CCMC of technical evidence provided by the evaluation holder, and is bound by the stated conditions and limitations. For the benefit of the user, a summary of the technical information that forms the basis of this evaluation has been included.

Product information

Product name

Duka Open Cell SPF

Product description

The product is a Type 1, spray-in-place, low-density, semi-flexible plastic foam insulation that has an open-cell structure. The product consists of

- Duka Open Cell SPF part A isocyanate, and
- Duka Open Cell SPF part B resin.

The final cured product is yellow and has a density of 6.8 kg/m³. At a thickness of 25.4 mm, the thermal resistance is 0.61 m²·°C/W.

Site-manufactured product

This is a site-manufactured product; it must be finished on site only by certified installers through the spray-application of raw materials bearing a CCMC number that are produced only at the manufacturing plant(s) below. See installation of spray-applied polyurethane insulation for more information on the requirements for installation and site quality assurance.

Manufacturing plant

This evaluation is valid only for products produced at the following plant:

Product name	Manufacturing plant
	Brantford, ON, CA
Duka Open Cell SPF	☑

☑ Indicates that the product from this manufacturing facility has been evaluated by the CCMC

Conditions and limitations

The CCMC's compliance opinion is bound by this product being used in accordance with the conditions and limitations set out below.

- This is a site-manufactured product whereby the installation of spray-applied polyurethane foam must be performed following a site quality assurance program by certified installers trained by the evaluation holder (or their representative) and licensed by the designated SQAP provider.
- The product can be installed in new or retrofit constructions. In either case, the product must be installed in open cavities in the following locations in a wood-frame construction that meets the requirements of the NBC 2015 (see Figure 1):
 - exterior walls including perimeter joists;
 - cathedral ceilings with a vented air space as required by the NBC 2015;
 - floors separating living spaces from a garage;
 - cantilever overhang floors; or
 - interior below-grade foundation walls.
- The building envelope where the product is installed must conform to the requirements of the NBC 2015 for vapour barriers, air barriers and damp proofing (interior below-grade walls).
- For retrofit applications whereby there may be occupants in the unaltered part of the building, the qualified installer must ensure that the spraying area is isolated and negatively pressurized by using an exfiltration rate of 0.3 air changes per hour for at least 1 day. An independent toxicological assessment determined that this ventilation rate must also be in effect for 1 day before occupancy is permitted in the newly insulated suite.
- The sprayed material should completely cover the surfaces between the studs, joists and other framing members. The surfaces to be covered should be clean, dry and not covered in frost, oil, grease, dust or other contaminants. As required in Article 9.25.2.3., Installation of Thermal Insulation, of Division B of the NBC 2015, the insulation must be installed so that there is a reasonably uniform insulating value over the entire face of the insulated area.
- The interior side of the applied semi-flexible polyurethane insulation must be covered with an approved thermal barrier as per Article 9.10.17.10., Protection of Foamed Plastics, of Division B of the NBC 2015.
- The insulation must be kept away from heat-emitting devices, such as recessed light fixtures and chimneys, at the minimum distance required by building regulations and safety codes.
- The maximum in-service temperature of the insulation must not exceed 70°C.
- The product must not be used where it may come in contact with water and must not be installed after its expiry date of 6 months from the date of manufacture.
- The isocyanate and resin components must have their respective containers (i.e., drums) identified with the phrase "CCMC 14138-R."
- The installation procedure must follow the manufacturer's instruction manual. A copy of the manual must be available at the job site at all times during the installation for review by the building official.

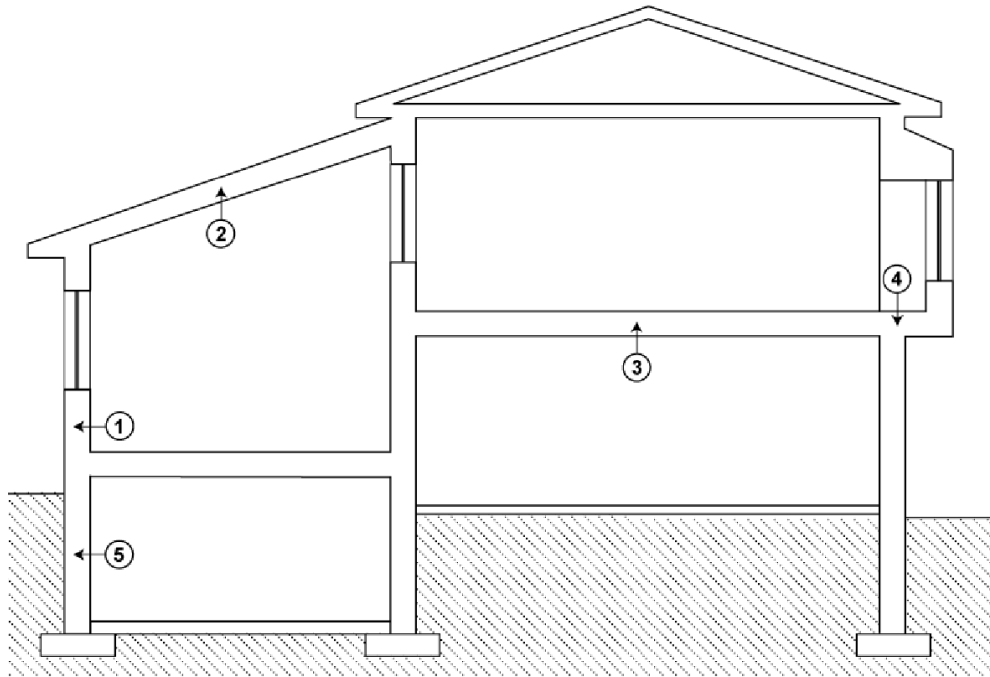


Figure 1. Application locations in open cavities in a wood-frame construction

1. Above-grade wall
2. Cathedral ceiling (vented)
3. Floor above garage
4. Cantilever floor
5. Interior foundation wall

Technical information

This evaluation is based on demonstrated conformance with the following criteria:

Criteria number	Criteria name
CCMC-TG-072119.03-15	CCMC Technical Guide for Spray-in-Place, Open-Cell Polyurethane Foam (OPF) Thermal Insulation
CCMC-TG-072119.03-20	CCMC Technical Guide for Spray-in-Place, Open-Cell Polyurethane Foam (OPF) Thermal Insulation

Performance requirements

Table 1. Results of testing

Property		Unit	Requirement		Result
Density		kg/m ³	> 6.8		6.8
Thermal resistance at 25-mm thickness		m ² ·°C/W	Report value		0.61
Water vapour transmission for 50-mm thickness		ng/(Pa·s·m ²)	> 1400 (Type 1)		1 580
Water absorption		%	Report value		17.4
Dimensional changes when exposed to:	80°C and ambient RH	% volumetric	min. -15	max. +10	0
	70°C and 97 ± 3% RH		min. -15	max. +14	-0.1
	-29°C and ambient RH		min. -1	-	-0.1
Emissions: time to occupancy		-	See note ⁽¹⁾		Pass

Note

- ¹ The Volatile Organic Compound (VOC) emissions under consideration were measured with an assumed room ventilation rate of 0.3 air changes per hour as per the NBC requirements for new construction. The determination of emissions and room concentration calculations were carried out by the National Research Council (NRC) of Canada. An independent toxicological report recommends a residential time to occupancy of 1 day. While the testing and evaluation represent the current state of the art in toxicological evaluation, such tests and their results do not purport to be conclusive with respect to the impact on health.

Fire test

Table 2. Results of fire tests ⁽¹⁾

Property	Requirement	Result
Flame-spread rating (CAN/ULC-S102 and CAN/ULC-S127)	Report value	315
Smoke development	Report value	195

This PDF is an alternative version. This document was published on 2024-02-29 and may not be the latest version of this evaluation. Users should consult the latest [published assessment](#) on the [CCMC Registry of Product Assessments](#), which contains the most up to date information. This PDF is intended for use as a record, not the latest information available.

Note

- 1 The thickness of the tested product was 50 mm.
-

Site quality assurance program (SQAP)

Installation of spray-applied polyurethane insulation

In addition to the material qualification above spray-applied polyurethane foams must be installed in accordance with their respective installation standard and under a Site Quality Assurance Program (SQAP). This evaluation holder has engaged the designated SQAP provider below to operate its SQAP program for the installation of this product by certified installers, and to provide third-party site auditing, as required. As with any evaluation, the evaluation holder is responsible for the quality of the finished product (installed foam), and therefore is required to ensure resolution of non-conforming installations.

The installation procedure must follow the manufacturer's instruction manual. A copy of the manual must be available at the job site at all times during the installation for review by the building official.

Certified installers

The evaluation holder requires that only specific, certified installers be authorized to install its proprietary spray-polyurethane insulation in buildings. All installers must be certified for the installation of this product by the designated SQAP provider, having a valid photo-identification license at the time of installation, and be able to present the license on request.

Third-party site auditing

As part of its SQAP, the evaluation holder also stipulates that periodic site-audit inspections be conducted by the designated SQAP provider. Upon completion of the site audit, the designated SQAP provider will report the product's conformity results and any corrective action required, if necessary, to the evaluation holder. Building officials can contact the SQAP provider to request a site-audits at a specific building site.

Designated SQAP provider

The following organization has been designated by the evaluation holder as their SQAP provider, and is recognized by the CCMC as an ISO/IEC 17024 accredited personnel certification body, and ISO/IEC 17020 accredited inspection body.

Urethane Foam Consultants (UFC)
160 Main Street South, Suite 547
Brampton, Ontario, L6W 4C1
Telephone: 905-702-2555
Fax: 905-456-9439
Website: foamexperts.ca

This PDF is an alternative version. This document was published on 2024-02-29 and may not be the latest version of this evaluation. Users should consult the latest published assessment on the CCMC Registry of Product Assessments, which contains the most up to date information. This PDF is intended for use as a record, not the latest information available.

Administrative information

Use of Canadian Construction Materials Centre (CCMC) assessments

This assessment must be read in the context of the entire [CCMC Registry of Product Assessments](#), any applicable building code or by-law requirements, and/or any other regulatory requirements (for example, the [Canada Consumer Product Safety Act](#), the [Canadian Environmental Protection Act](#), etc.).

It is the responsibility of the user to confirm that the assessment they are using is current and has not been withdrawn or superseded by a later version on the [CCMC Registry of Product Assessments](#).

Disclaimer

The National Research Council of Canada (NRC) has evaluated only the characteristics of the specific product described herein. The information and opinions in this evaluation are directed to those who have the appropriate degree of experience to use and apply its contents (such as authorities having jurisdiction, design professionals and specifiers). This evaluation is valid when the product is used as part of permitted construction, respecting all conditions and limitations stated in the evaluation, and in accordance with applicable building codes and by-laws.

This evaluation is provided without representation, warranty or guarantee of any kind, expressed or implied, and the NRC provides no endorsement for any evaluated product. The NRC accepts no responsibility whatsoever arising in any way from any and all use of or reliance on the information contained herein or the use of any evaluated product. The NRC is not undertaking to render professional or other services on behalf of any person or entity nor to perform any duty owed by any person or entity to another person or entity.

Language

Une version française de ce document est disponible.

In the case of any discrepancy between the English and French version of this document, the English version shall prevail.

Copyright

© His Majesty the King in Right of Canada, as represented by the National Research Council of Canada, 2024

All rights reserved. No part of this publication may be reproduced, stored in a retrieval system, or transmitted in any form or by any means, electronic, mechanical, photocopying, recording or otherwise, without the prior written permission of the CCMC.

This PDF is an alternative version. This document was published on 2024-02-29 and may not be the latest version of this evaluation. Users should consult the latest [published assessment](#) on the [CCMC Registry of Product Assessments](#), which contains the most up to date information. This PDF is intended for use as a record, not the latest information available.

CCMC recognition

The Canadian Construction Materials Centre (CCMC) assesses compliance with Canadian building, energy and safety codes. We are the only construction code compliance service supported and operated by the Government of Canada. Trusted by over 6,000 regulators across Canada.

Most Canadian authorities having jurisdiction (AHJs) consider CCMC product assessments acceptable as evidence for product approval.

CCMC assessments are recognized by construction authorities across Canada:

Alliance of Canadian Building Official Associations (ACBOA)



[\(Alliance of Canadian Building Official Associations \(ACBOA\)\)](#)

First Nations National Building Officers Association (FNNBOA)



[\(First Nations National Building Officers Association \(FNNBOA\)\)](#)

Canadian Home Builders' Association (CHBA)



[\(Canadian Home Builders' Association \(CHBA\)\)](#)

Alberta Building Officials Association (ABOA)



[\(Alberta Building Officials Associations \(ABOA\)\)](#)

Saskatchewan Building Officials Association (SBOA)



[\(Saskatchewan Building Officials Association \(SBOA\)\)](#)

Manitoba Building Officials Association (MBOA)



[\(Manitoba Building Officials Association \(MBOA\)\)](#)

Ontario Building Officials Association (OBOA)



[\(Ontario Building Officials Association \(OBOA\)\)](#)

New Brunswick Building Officials Association (NBBOA)



[\(New Brunswick Building Officials Association \(NBBOA\)\)](#)

Nova Scotia Building Officials Association (NSBOA)



[\(Nova Scotia Building Officials Association \(NSBOA\)\)](#)

The CCMC provides code compliance assessments to Canadian code requirements, consulting nationwide with construction regulators to elicit regional variations in code requirements as well as provincial and local interpretations. Users are advised to review the technical information presented in CCMC assessments when making approval decisions. [Learn more about how the CCMC provides a unique service for Canada.](#)

For more information, contact the CCMC by phone at (613) 993-6189 or by email at ccmc@nrc-cnrc.gc.ca

NOTICE

The information presented on this webpage (in HTML format) is the most up-to-date information available from the CCMC about this assessment.

By downloading this PDF you acknowledge that:

- this PDF is intended for record-keeping purposes only,
- it represents the information as it was available at the time of downloading, and
- it may not reflect the latest available information at some future date.

References to this CCMC assessment (in product literature, on websites, etc.) must be made by linking to the evaluation webpage. **This PDF must not be used as a means of distributing this assessment to an audience.**

[View PDF \(Portable document format\)](#)

Code compliance as an acceptable solution

Code Compliance via Acceptable Solutions

If a building design (e.g. material, component, assembly or system) can be shown to meet all provisions of the applicable **acceptable solutions** in Division B (e.g. it complies with the applicable provisions of a referenced standard), it is deemed to have satisfied the objectives and functional statements linked to those provisions and thus to have complied with that part of the Code.

— National Building Code of Canada, Sentence A-1.2.1.1.(1)(a)

The CCMC has determined that compliance with this provision of the Code has been demonstrated as an **Acceptable Solution**. The evaluation report provides a summary of the basis of CCMC's compliance opinion.

CCMC's code compliance opinions

All CCMC evaluation reports are opinions of code compliance established in accordance with the National Building Code of Canada, Subsection 1.2.1. "Compliance with this Code," which requires compliance to be achieved by:

- complying with the applicable acceptable solutions in Division B, or
- using an alternative solution that will achieve at least the minimum level of performance required by Division B in the areas defined by the objective and functional statements attributed to the applicable acceptable solutions.

The CCMC assesses compliance with Canadian building, energy and safety codes, and is trusted by over 6,000 regulators across Canada.

Code compliance as an alternative solution

Code Compliance via Alternative Solutions

Where a design differs from the acceptable solutions in Division B, then it should be treated as an **"alternative solution."** A proponent of an alternative solution must demonstrate that the alternative solution addresses the same issues as the applicable acceptable solutions in Division B and their attributed objectives and functional statements. However, because the objectives and functional statements are entirely qualitative, demonstrating compliance with them in isolation is not possible. Therefore, Clause 1.2.1.1.(1)(b) identifies the principle that Division B establishes the quantitative performance targets that alternative solutions must meet. In many cases, these targets are not defined very precisely by the acceptable solutions [...] Nevertheless, Clause 1.2.1.1.(1)(b) makes it clear that an effort must be made to demonstrate that an alternative solution will perform as well as a design that would satisfy the applicable acceptable solutions in Division B—not “well enough” but “as well as.”

— National Building Code of Canada, Sentence A-1.2.1.1.(1)(b)

The CCMC has determined that compliance with this provision of the Code has been demonstrated as an **Alternative Solution**. The evaluation report provides a summary of the basis of CCMC's compliance opinion.

CCMC's code compliance opinions

All CCMC evaluation reports are opinions of code compliance established in accordance with the National Building Code of Canada, Subsection 1.2.1. "Compliance with this Code," which requires compliance to be achieved by:

- complying with the applicable acceptable solutions in Division B, or
- using an alternative solution that will achieve at least the minimum level of performance required by Division B in the areas defined by the objective and functional statements attributed to the applicable acceptable solutions.

The CCMC assesses compliance with Canadian building, energy and safety codes, and is trusted by over 6,000 regulators across Canada.